

UKG Ready
Release 94 Highlights

➤ Explore what's new
by clicking a section below:

Cross-Suite

Workforce
Management

Talent

Release Resources



August 2024

UKG Ready Release Highlights

Release 94



© UKG Inc. All rights reserved.



UKG Ready
Release 94 Highlights

Explore what's new
by clicking a section below:

> Cross-Suite

Workforce
Management

Talent

Release Resources

Recommended Charts

Withholding Forms
Updates

Security Profile
Improvements

MFA Updates

Insights Explorer

Cross-Suite

Get a Sneak Peek of:

Core

Recommended Charts

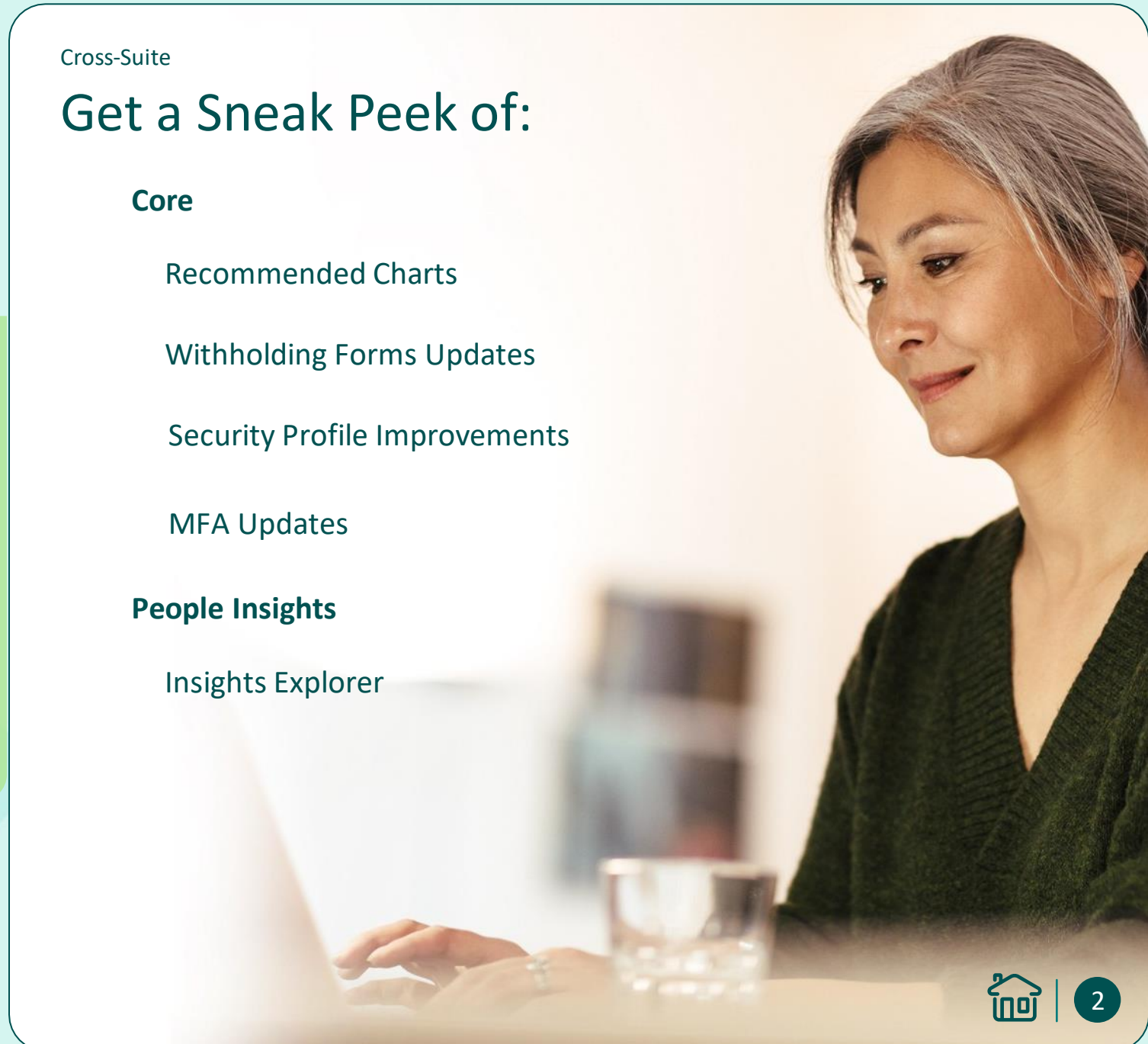
Withholding Forms Updates

Security Profile Improvements

MFA Updates

People Insights

Insights Explorer





UKG Ready
Release 94 Highlights

Explore what's new
by clicking a section below:

> Cross-Suite

Workforce
Management

Talent

Release Resources

Recommended Charts

Withholding Forms
Updates

Security Profile
Improvements

MFA Updates

Insights Explorer

Cross-Suite – Core

Recommended Charts

ON Feature Delivered


Introducing an easy to use, one click option that will create meaningful, recommended charts in any responsive report in your solution. This functionality aims to help admins and managers improve their use of charts and capture critical metrics in a visual format.

The screenshot displays the 'Employee Information' report in the UKG system. At the top, there's a search bar and navigation options like 'Hire', 'Terminate', 'Rehire', 'Communicate', and 'View'. Below the navigation is a table with columns for Employee ID, Username, First Name, Employee Country/Legal Division, In Payroll, Locked, Uniform Size AEF, Division AEF, Submit/Finalize Payroll AEF, and TermX Reas. The table shows data for employees Valerie, Kathy, John, and Bill. Below the table, the 'Charts' section is active, showing three recommended charts. The first chart, 'Employee Id by Employee EIN', is a horizontal bar chart showing counts for Chicago and Indianapolis. The second chart, 'Row Count by First Name', is a sunburst chart showing counts for various names like Tom, Aaron, asdf, Bill, Cindy, Hank, Robert, Rachel, Ryan, Save, and Thomas. The third chart is another 'Employee Id by Employee EIN' horizontal bar chart, identical to the first one.



UKG Ready
Release 94 Highlights

Explore what's new
by clicking a section below:

 Cross-Suite

Workforce
Management

Talent

Release Resources

Recommended Charts

Withholding Forms
Updates

Security Profile
Improvements

MFA Updates

Insights Explorer

Cross-Suite – Core

Withholding Form Updates

 Feature Delivered

 Customer Idea

We're reintroducing the new withholding forms screen this release with some additional functionality. As a reminder, a new option in the "Screen Link Withholding" checklist will display a new withholding form selection screen. This screen will only display withholding forms for US states where an employee lives and works, in hopes to eliminate confusion around which withholding forms are required to be filled out during the onboarding process.

We've also added some functionality to help with the submission process. This includes:

- Preventing the checklist item from being marked auto-complete
- Adding a new status column to track if a user has completed the form
- Providing an option to download PDF column for federal and state forms.





UKG Ready
Release 94 Highlights

Explore what's new
by clicking a section below:

➤ Cross-Suite

Workforce
Management

Talent

Release Resources

Recommended Charts

Withholding Forms
Updates

Security Profile
Improvements

MFA Updates

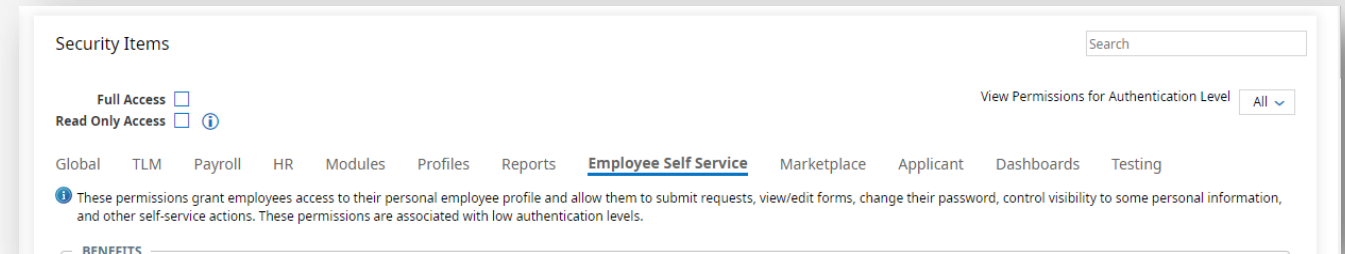
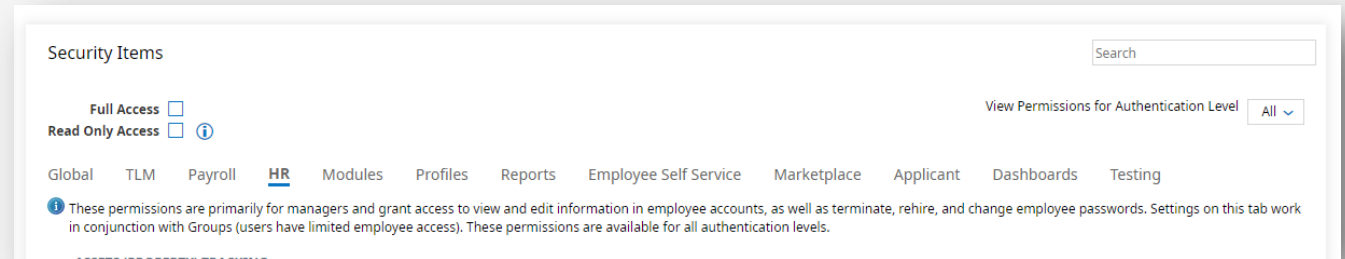
Insights Explorer

Cross-Suite – Core

Security Profile Improvements

ON Feature Delivered

Understand what is needed for different security profile types through the latest updates to the security profile permission page. We're introducing descriptions that explain the overall purpose of the security item tabs in the Security profile to help admins understand what the permissions under that tab's intentions are. Admins will be able to quickly see who the permissions in each tab are meant for.





UKG Ready
Release 94 Highlights

Explore what's new
by clicking a section below:

> Cross-Suite

Workforce
Management

Talent

Release Resources

Recommended Charts

Withholding Forms
Updates

Security Profile
Improvements

MFA Updates

Insights Explorer

Cross-Suite – Core

MFA Updates

ON Feature Delivered

To better improve the login experience for our customers we are making more updates to the authentication process and the password policy guidelines.

Password Policy Updates:

- We are only requiring users to have 3-character sets instead of 4 when creating a new password
- As of R93 organizations have the option to set their minimum password character length to 8

Authentication Updates:

- Users can now access the Two-Factor Authentication page via the mobile app
- Manager authentication level recertification frequency can be configured for 14 or 30 days





UKG Ready
Release 94 Highlights

Explore what's new
by clicking a section below:

➤ Cross-Suite

Workforce
Management

Talent

Release Resources

Recommended Charts

Withholding Forms
Updates

Security Profile
Improvements

MFA Updates

Insights Explorer

Cross-Suite – People Insights

Insights Explorer Enhancements

ON Feature Delivered

Filters can now be used to modify individual Pivot Charts. Users can use these new filters by clicking the filter pill buttons in the top right of a chart. Filters can be modified as needed from both Insights Explorer and Dashboards if you are a People Insights customer. The goal of this enhancement is to eliminate the need to create a new chart each time you need to look at a certain data set.



Note: This enhancement is only applicable for those using the People Insights module.





UKG Ready
Release 94 Highlights

Explore what's new
by clicking a section below:

Cross-Suite



Workforce
Management

Basic Scheduling- New
Action Buttons

Talent

Release Resources

Workforce Management

Get a Sneak Peek of:

Scheduler

Basic Scheduling- New Action Buttons





UKG Ready
Release 94 Highlights

Explore what's new
by clicking a section below:

Cross-Suite

Workforce
Management

Basic Scheduling- New
Action Buttons

Talent

Release Resources

Workforce Management

Basic Scheduling- New Action Buttons

ON Feature Delivered



We have improved the Basic Scheduling week view in our Workforce Management platform by adding new action buttons. These buttons will streamline the process of editing schedules. Managers can now easily remove a shift from an employee using these buttons. Additionally, we've introduced a new copy action for quick duplication and pasting of shift assignments.

The screenshot displays the UKG Basic Scheduling interface. At the top, the UKG logo and the time '10:09 AM (CDT)' are visible. Below the logo, the breadcrumb 'Schedule > Basic Scheduling > Schedules' is shown. The main heading is 'Weekly Schedule'. Below this, there are navigation options for 'Week View', 'Page 1 of 1', and '1 - 65 of 65 Rows'. A date range selector shows 'Jul 22, 2024 - Jul 28, 2024'. A 'Settings' dropdown is open, showing options for 'Show Contracted Hours', 'Show Time Offs', and 'Show Pending Time Offs'. The main area is a grid with columns for 'Employees', 'MON', 'TUE', 'WED', and 'THU'. The 'Employees' column lists names like Allen A. MA1, Arlie Fi. A143, Brett B. MA2, Carter ... MA3, Chaun... C144, Daniel ... MA4, and Devon ... D139. The grid shows shift assignments for Monday, Tuesday, and Wednesday. A red box highlights a dropdown menu for a shift, containing the options 'Manage Shift', 'Copy', and 'Remove'.





UKG Ready
Release 94 Highlights

Explore what's new
by clicking a section below:

Cross-Suite

Workforce
Management



Talent

UKG Screen

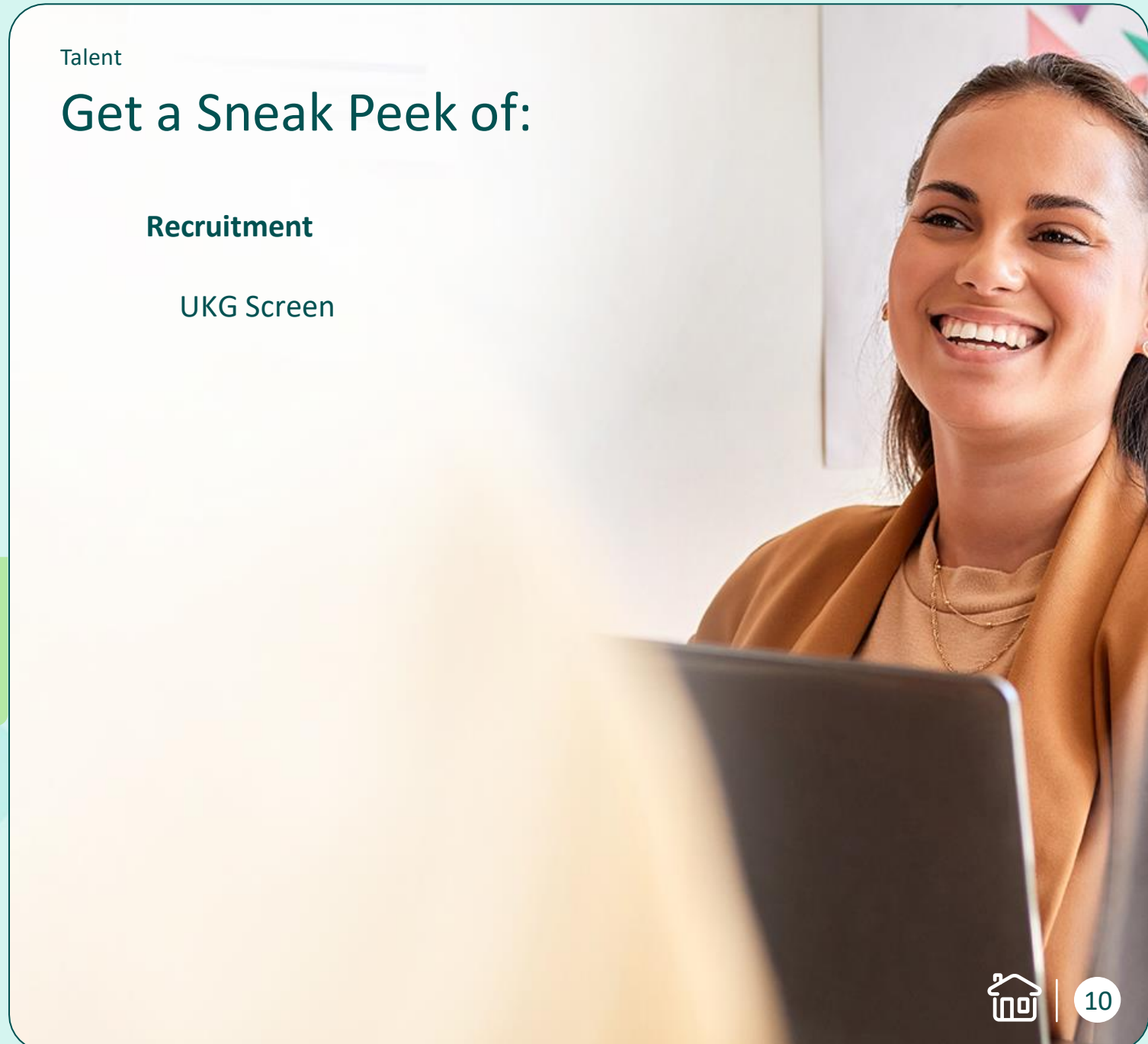
Release Resources

Talent

Get a Sneak Peek of:

Recruitment

UKG Screen





UKG Ready
Release 94 Highlights

Explore what's new
by clicking a section below:

Cross-Suite

Workforce
Management

➤ Talent

UKG Screen

Release Resources

Talent – Recruitment

UKG Screen by HireRight

OFF Feature Delivered

Introducing a new partnership, UKG Screen by HireRight. This is a marketplace add on that aims to ease the background screen experience for both the admin and the new hire. Through this integration users can initiate background screens and report on those results directly within UKG Ready.

Note: Organizations must have an account with HireRight to complete the UKG Screen set up.

To add on this feature in UKG Ready go to,

Menu

Settings

Marketplace

Marketplace
Setup

UKG Screen by
HireRight

Add to
Company



Additional Feature Resources

[Product Spotlight Video](#)





UKG Ready
Release 94 Highlights

Explore what's new
by clicking a section below:

Cross-Suite

Workforce
Management

Talent

➤ Release Resources

All Release Readiness
Resources

Release Resources

Explore all our Release Readiness Resources!



[UKG Ready Release Readiness Page](#)



[UKG Ready Release Spotlight Video](#)



readyConnect Panel (in product)



Release Notes (in product under ***My Info > Help > Download Documentation***)

Note: These are only some of the features being delivered in August; for details on everything included in the release, checkout the August Release Notes.

